



**RUSSELL
SIMPSON**

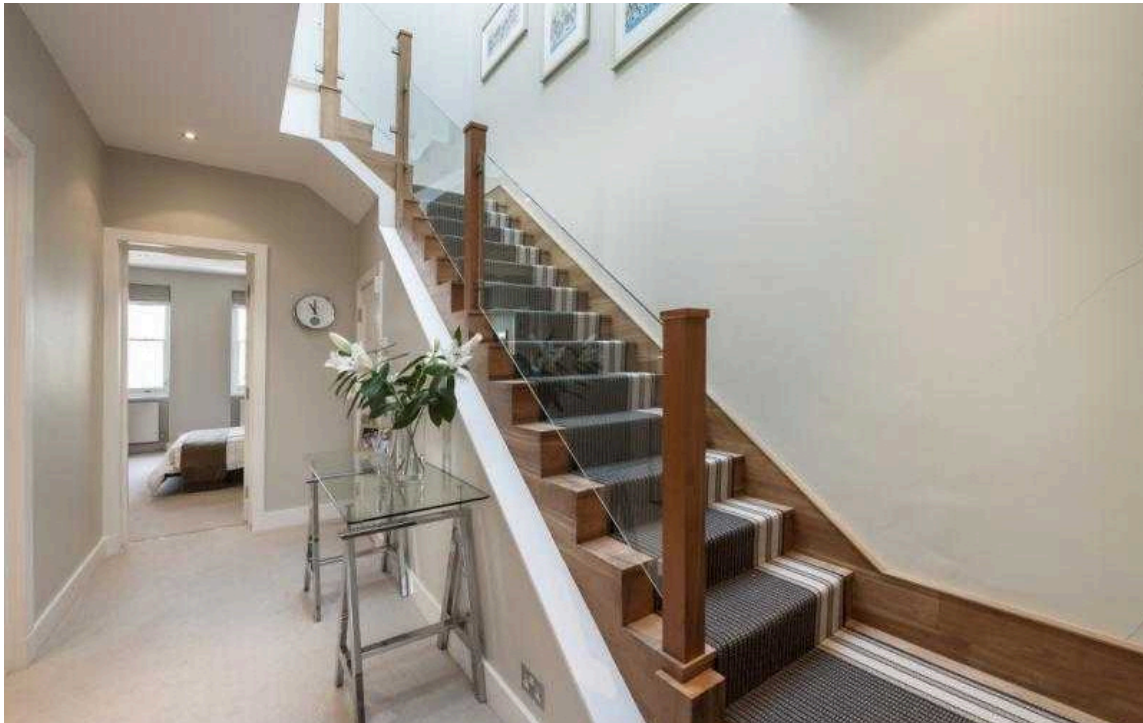
Ormonde Gate

ORMONDE GATE
CHELSEA SW8

Ormonde Gate

Sold

BEDROOMS 4	INTERNAL 1,720 SQ FT	OUTDOOR —	COUNCIL CHE
BATHROOMS 2	159 SQM	EPC E	COUNCIL TAX —
TENURE Share of freehold	LEASE LENGTH 988 YEARS	GROUND RENT —	SERVICE CHARGE £2,147 P/Y



The Property

Situated on the top two floors of this very attractive period building this very light and airy flat has magnificent and long views over Burton Court to the front, from three of the four bedrooms, and far reaching views to the south from the balcony and roof terrace. There are also very good ceiling heights. The flat is in excellent order throughout, is spacious (1720 sq ft) and is exceptionally light, a large skylight having been installed in the top floor roof.

Ormonde Gate is a short walk from Sloane Square and the world class shopping facilities, the King's Road and the underground. Also within easy access is the Riverboat taxi at Albert Bridge and the 200 acres of open space at Battersea Park.



img 1

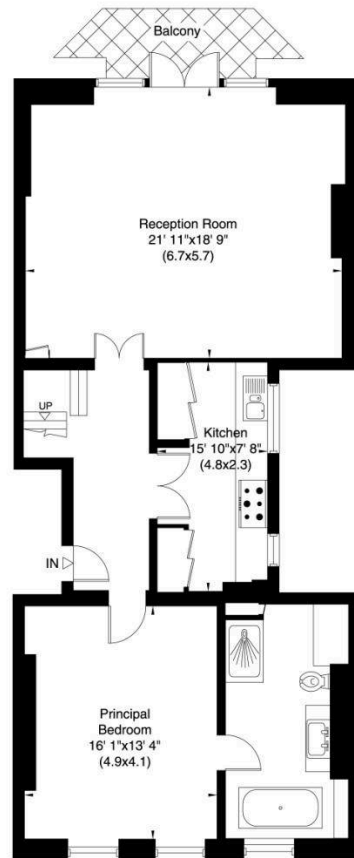
Picture No.02

img 2

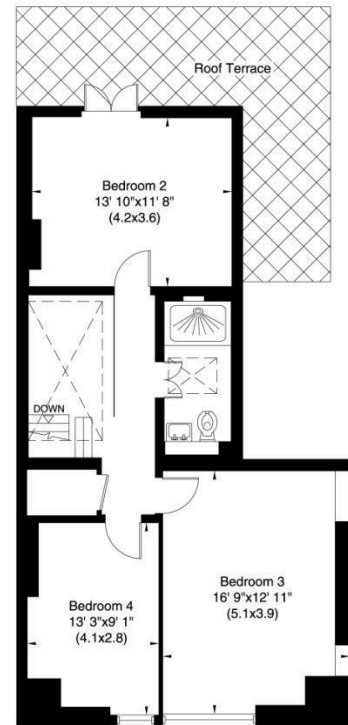
Picture No.03

7 CONWAY HOUSE
5-6 ORMANDE GATE
LONDON SW3

Gross Internal Area: 160 Sq. metres
1720 Sq.feet



Third Floor



Fourth Floor

**RUSSELL
SIMPSON**

Contact Us

+44 (0) 20 7225 0277

Contact us

info@russellsimpson.co.uk

Sydney Street

+44 (0) 20 7225 0277

151A Sydney Street

London

SW3 6NT

chelsea@russellsimpson.co.uk

Kensington Square

+44 (0) 20 3761 9691

13 Kensington Square

London

W8 5HD

kensington@russellsimpson.co.uk