



## **RUSSELL SIMPSON**

Elegant two-bedroom flat with wide balcony overlooking one of London's most beautiful garden squares

ONSLow SQUARE  
SOUTH KENSINGTON SW7

Onslow Square

£2,975,000

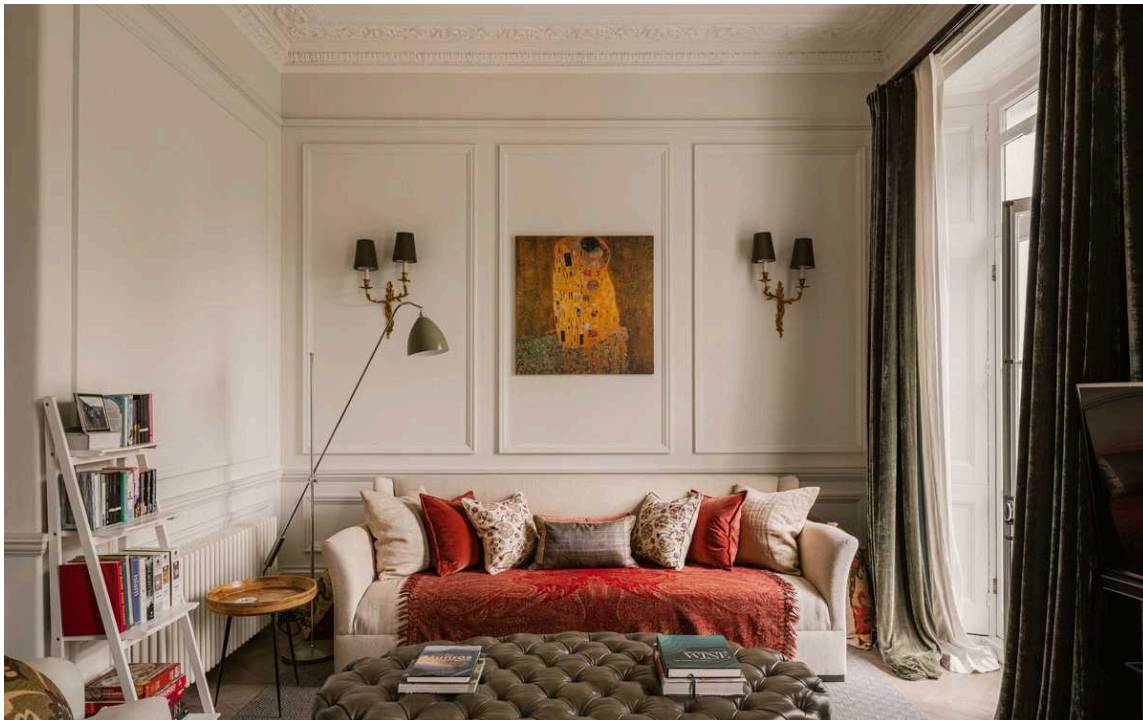
<div>BEDROOMS</div> <div>2</div>	<div>INTERNAL</div> <div>1,236 <small>SQ FT</small></div> <div>114 <small>SQM</small></div>	<div>OUTDOOR</div> <div>78 <small>SQ FT</small></div>	<div>COUNCIL</div> <div>RBKC</div>
<div>BATHROOMS</div> <div>2</div>		<div>EPC</div> <div>C</div>	<div>COUNCIL TAX</div> <div>G</div>
<div>TENURE</div> <div>Leasehold</div>	<div>LEASE LENGTH</div> <div>75 <small>YEARS</small></div>	<div>GROUND RENT</div> <div>£400 <small>P/Y</small></div>	<div>SERVICE CHARGE</div> <div>£9,843 <small>P/Y</small></div>



## The Property

Spacious flat with high ceilings and tasteful interiors close to South Kensington underground station

Stepping into the flat on the first floor, the front hall opens onto a generous reception room. This includes a pair of full-length French doors that face south-west and fill the space with light. Opposite is a spacious kitchen with fitted units.







## The Bedrooms

The property also contains a pair of double bedrooms. One of these has an ensuite bathroom, while the other has a French door leading out onto the terrace. An office and a second bathroom complete this space. The flat is decorated in a sophisticated style, with high ceilings and elegant mouldings throughout. It is presented in very good condition. It includes a wide, south-west facing balcony with enough space for outdoor seating and a basement storage unit.

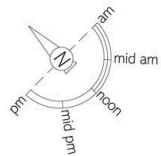


## The Neighbourhood



Residents have access to the award-winning gardens of Onslow Square. These are some of the largest private gardens in the borough, laid out with lawns, flowerbeds and shaded areas of woodland. The grand townhouses of Onslow Square were built by Charles James Freake, the architect behind many of the neighbourhood's most impressive facades. The terrace on this side of the square is separated from the pavement by a hedgerow, giving added privacy.

Over the years, this square has been home to several celebrated figures, including the novelist William Makepeace Thackeray, author of *Vanity Fair*. Today it forms a calm and settled space just a few minutes' walk from South Kensington underground station. The many restaurants and shops of the Fulham Road are also close.



## Onslow Square, SW7

**RUSSELL  
SIMPSON**

### Approximate Internal Area

1,236 sq ft/ 115 sq m

### Including storage

78 sq ft/ 7 sq m

This plan is for layout guidance only. Not drawn to scale unless stated. Windows and door openings are approximate. Whilst every care is taken in the preparation of this plan, please check all dimensions, shapes, and compass bearings before making any decisions reliant upon them.



**RUSSELL  
SIMPSON**

---

## Contact Us

+44 (0) 20 7225 0277

151A Sydney Street  
London  
SW3 6NT

[chelsea@russellsimpson.co.uk](mailto:chelsea@russellsimpson.co.uk)

In accordance with the Property Mis-Description Act 1991, the following details have been prepared in good faith, and are not intended to constitute part of an offer or contract. Any information contained herein (whether in the text, plans or photographs) is given in good faith but should not be relied upon as being a statement of representation of fact. Nothing in these Particulars shall be deemed to be a statement that the property is in good condition or otherwise nor that any services or facilities are in good working order. Any measurements of distances referred to herein are approximate only. October 2021