

**RUSSELL  
SIMPSON**

Old Church Street

OLD CHURCH STREET  
CHELSEA SW3

Old Church Street

Sold

BEDROOMS 5	INTERNAL  3,519 SQ FT  326 SQM	OUTDOOR  —	COUNCIL TAX  —
BATHROOMS 4		EPC E	TENURE Freehold



## The Property

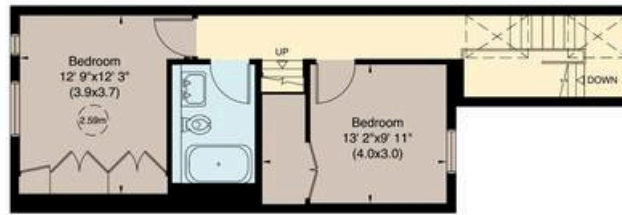
Measuring approx. 3,519 square feet and enjoying the benefit of a large west-facing garden, this impressive family house offers excellent all-round accommodation to include five well-appointed bedrooms and four bathrooms.

Located on the southern part of Old Church Street moments from the world famous shops, restaurants and amenities of the Kings Road, the River Thames and open spaces of Battersea Park can also be found just to the south of Chelsea Embankment.

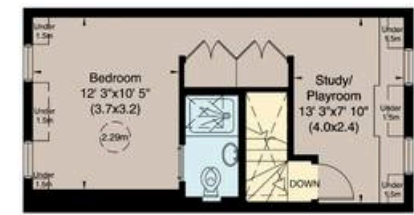




FIRST FLOOR



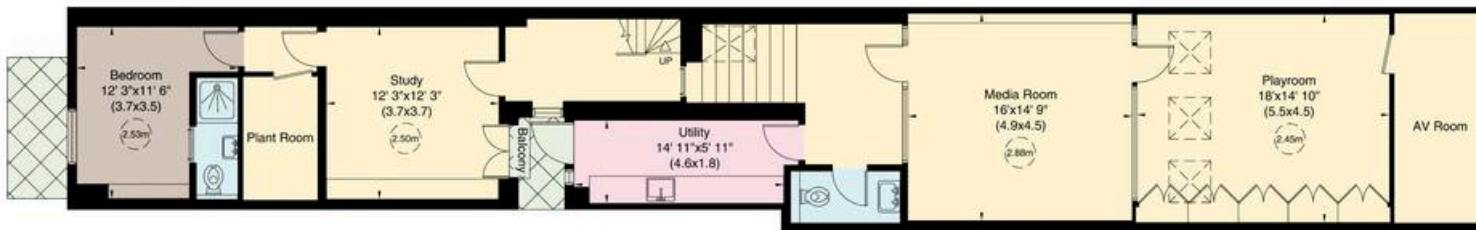
SECOND FLOOR



THIRD FLOOR



GROUND FLOOR



LOWER GROUND FLOOR



APPROXIMATE GROSS INTERNAL AREA

335 sq m (3,601 sq ft) Including Under 1.5m / 327 sq m (3,519 sq ft) Excluding Under 1.5m

For identification only. Not to scale.

**RUSSELL  
SIMPSON**

---

## Contact Us

+44 (0) 20 7225 0277

Contact us

[info@russellsimpson.co.uk](mailto:info@russellsimpson.co.uk)

---

## Sydney Street

+44 (0) 20 7225 0277

151A Sydney Street

London

SW3 6NT

[chelsea@russellsimpson.co.uk](mailto:chelsea@russellsimpson.co.uk)

---

## Kensington Square

+44 (0) 20 3761 9691

13 Kensington Square

London

W8 5HD

[kensington@russellsimpson.co.uk](mailto:kensington@russellsimpson.co.uk)