



RUSSELL SIMPSON

Spacious and stylish lateral flat with
balcony moments away from
Holland Park

OAKWOOD COURT
HOLLAND PARK W14

Oakwood Court

Sold

<div>BEDROOMS</div> <div>4</div>	<div>INTERNAL</div> <div>2,443 <small>SQ FT</small></div> <div>226 <small>SQM</small></div>	<div>OUTDOOR</div> <div>61 <small>SQ FT</small></div>	<div>COUNCIL</div> <div>—</div>
<div>BATHROOMS</div> <div>4</div>		<div>EPC</div> <div>D</div>	<div>COUNCIL TAX</div> <div>H</div>
<div>TENURE</div> <div>Leasehold</div>	<div>LEASE LENGTH</div> <div>143 <small>YEARS</small></div>	<div>GROUND RENT</div> <div>—</div>	<div>SERVICE CHARGE</div> <div>£11,454 <small>P/Y</small></div>



The Property

Contemporary four bedroom flat in a grand mansion block with porter and lift

The flat is decorated in a modern, minimalist fashion. Combined with the fifth-floor position, this makes for bright and spacious interiors.





Indoor Spaces

Entering the flat on the fifth floor, a central corridor connects the main rooms of flat. A pair of connected reception rooms occupy the front, with enough space for separate dining and seating areas. These rooms include full length windows and two French doors opening out onto a balcony. In addition, the second room leads through to a kitchen with central island and small pantry.



The Bedrooms

The rear half of the flat contains four bedrooms. The principal bedroom has a south-facing bay window, a corridor dressing room and a well-proportioned bathroom with shower and bath. The other three bedrooms have ensuite bathrooms, while two of them have separate dressing areas.





Outdoor Spaces

The property includes a balcony with enough room for outdoor eating. The building is an impressive red-brick mansion block with porter and lift. In addition, residents have the right to apply for off-street parking. The property has access to communal gardens.



The Neighbourhood

Oakwood Court is a short walk away from the western entrance of Holland Park. From here, Kensington Olympia station is close, while the restaurants and shops of Kensington High Street are also nearby. In addition, two of London's most celebrated small museums are within easy reach: Leighton House and the Design Museum.

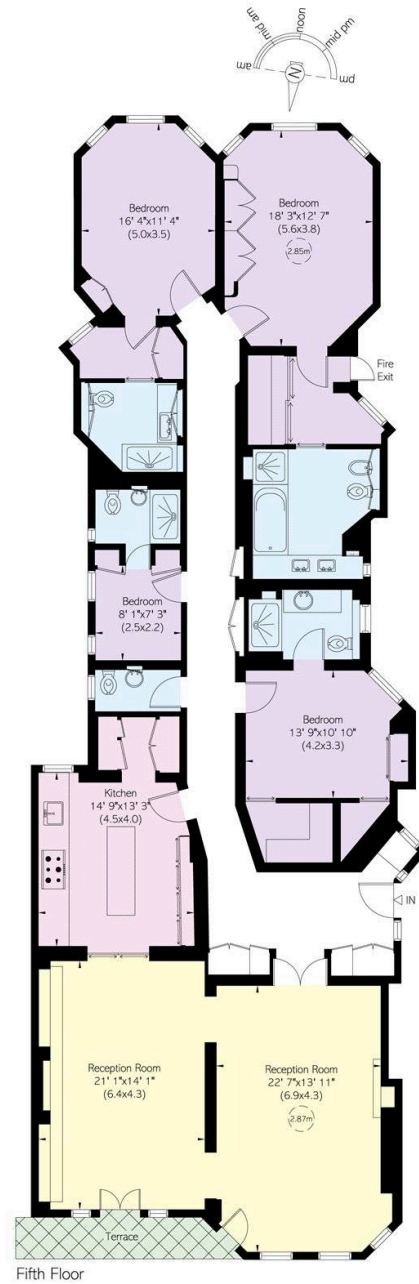
Oakwood Court, W14

Approximate Internal Area
2,443 sq ft/ 227 sq m

Outside Area
62 sq ft/ 6 sq m

**RUSSELL
SIMPSON**

This plan is for layout guidance only.
Not drawn to scale unless stated. Windows
and door openings are approximate. Whilst
every care is taken in the preparation of this
plan, please check all dimensions, shapes,
and compass bearings before making any
decisions reliant upon them.



**RUSSELL
SIMPSON**

Contact Us

+44 (0) 20 7225 0277

Contact us

info@russellsimpson.co.uk

Sydney Street

+44 (0) 20 7225 0277

151A Sydney Street
London
SW3 6NT

chelsea@russellsimpson.co.uk

Kensington Square

+44 (0) 20 3761 9691

13 Kensington Square
London
W8 5HD

kensington@russellsimpson.co.uk