

## **RUSSELL SIMPSON**

Elegant ground floor apartment set  
quietly in the heart of Kensington

MOUNT CARMEL CHAMBERS  
KENSINGTON W8

# Mount Carmel Chambers

£1,000,000

BEDROOMS 1	INTERNAL 689 SQ FT	OUTDOOR 53 SQ FT	COUNCIL RBKC
BATHROOMS 1	64 SQM	EPC C	COUNCIL TAX F
TENURE Leasehold	LEASE LENGTH 86 YEARS	GROUND RENT —	SERVICE CHARGE —

# The Property

A beautifully presented ground floor apartment with a private garden and porter.

Entering the apartment via its own front door, you step through a charming lobby and directly into a generous reception room and kitchen area. The open plan design creates a sophisticated living environment, with wooden floors and muted tones adding warmth.



## Indoor Spaces

The kitchen features fitted units and modern appliances, with ample space for dining.



## The Bedroom

The well-proportioned bedroom overlooks the garden, creating a peaceful haven with excellent natural light, and built-in storage maximises the space efficiently. The apartment also includes a contemporary bathroom with modern fixtures and a separate WC. Set back from the hustle and bustle of Kensington, this tranquil property balances modern interiors and a considered layout.





## Outdoor Spaces

The property includes a delightful south-west facing garden, offering privacy and the option of outdoor dining and entertaining.

## The Neighbourhood

Dukes Lane is a quiet residential address in the heart of Kensington, moments away from the upmarket boutiques and restaurants of Kensington High Street. The location offers easy access to Hyde Park and the area's cultural attractions. Kensington High Street station is within walking distance, providing excellent transport links across London. The area combines the convenience of central London living with the charm of a peaceful residential setting.

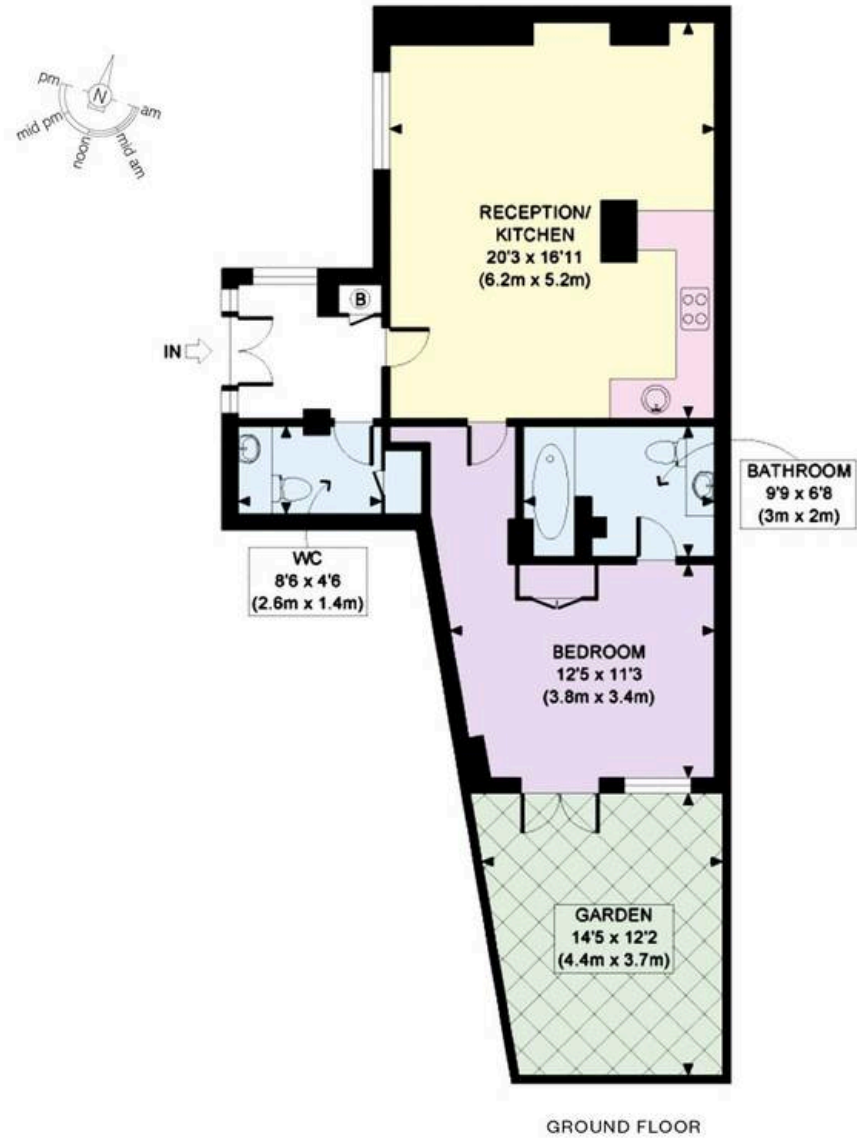


The Retreat,  
Mount Carmel Chambers,  
W8

**Approx Gross Internal Area**  
689 sq ft / 64 sq m

**RUSSELL  
SIMPSON**

This plan is for layout guidance only. Not drawn to scale unless stated. Windows and door openings are approximate. Whilst every care is taken in the preparation of this plan, please check all dimensions, shapes, and compass bearings before making any decisions reliant upon them.



**RUSSELL  
SIMPSON**

---

## Contact Us

+44 (0) 20 3761 9691

13 Kensington Square  
London  
W8 5HD

[kensington@russellsimpson.co.uk](mailto:kensington@russellsimpson.co.uk)