



RUSSELL SIMPSON

Cleverly designed studio in
prestigious Chelsea location

MERIDEN COURT
CHELSEA SW3

Meriden Court

£500,000

BEDROOMS 1	INTERNAL 370 SQ FT	OUTDOOR —	COUNCIL RBKC
BATHROOMS 1	34 SQM	EPC C	COUNCIL TAX D
TENURE Leasehold	LEASE LENGTH 96 YEARS	GROUND RENT —	SERVICE CHARGE £5,976 P/Y



The Property

A thoughtfully laid-out studio with porter service and lift

The flat has been decorated in a refined contemporary style throughout. The raised sleeping platform is an inspired design solution that creates distinct living zones within the studio format, while the high ceilings and large windows fill the space with light and add to the sense of generous proportions.



Indoor Spaces

Positioned on the second floor of this popular Art-Deco block, you enter into a bright and well-proportioned studio. The accommodation has been cleverly configured to maximise both space and privacy, with the main living area featuring space for entertaining, whilst giving easy access to the contemporary kitchen.



The Bedrooms

The studio's most distinctive feature is the raised sleeping platform, accessed by built-in steps and creating a separate bedroom area while maintaining the open feel of the space. This elevated sleeping nook is beautifully designed with built-in storage beneath and an abstract divider running along one side.

The accommodation is completed by a spacious bathroom featuring contemporary fixtures including a bath and fitted shower.





The Neighbourhood

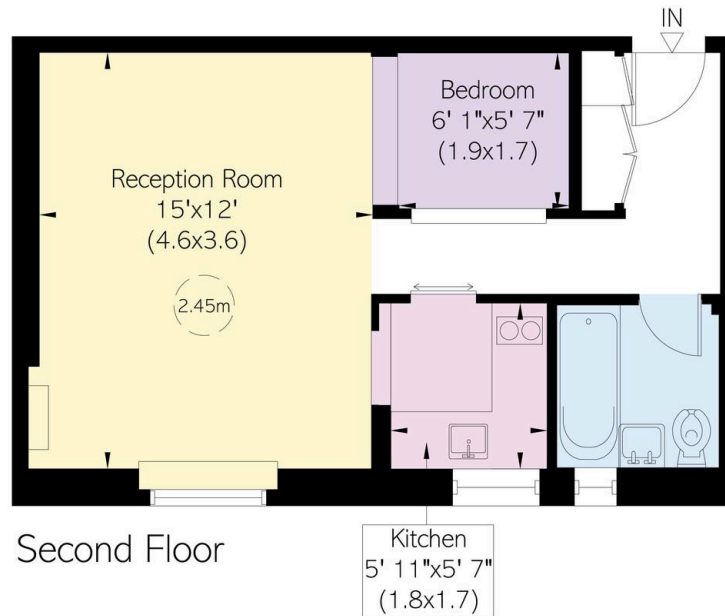
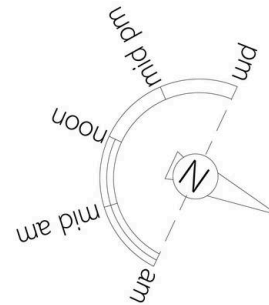
Chelsea Manor Street is a quiet residential address in the heart of Chelsea, moments away from the King's Road with its upmarket boutiques and many restaurants. The location offers easy access to the open spaces of Battersea Park and the cultural attractions of the Saatchi Gallery. Sloane Square underground station is within walking distance, providing excellent transport links across London. The area remains one of London's most prestigious residential locations, with the Royal Hospital Chelsea and Chelsea Physic Garden nearby adding to the neighbourhood's distinguished character.

Meriden Court,
Chelsea Manor Street, SW3

**RUSSELL
SIMPSON**

Approximate Internal Area
370 sq ft/ 34 sq m

This plan is for layout guidance only. Not drawn to scale unless stated. Windows and door openings are approximate. Whilst every care is taken in the preparation of this plan, please check all dimensions, shapes, and compass bearings before making any decisions reliant upon them.



**RUSSELL
SIMPSON**

Contact Us

+44 (0) 20 7225 0277

151A Sydney Street
London
SW3 6NT

chelsea@russellsimpson.co.uk