

RUSSELL SIMPSON

Three-bedroom flat with bright and
stylish interiors close to South
Kensington station

MALVERN COURT
SOUTH KENSINGTON SW7

Malvern Court

Sold

<div>BEDROOMS</div> <div>3</div>	<div>INTERNAL</div> <div>1,195 <small>SQ FT</small></div> <div>111 <small>SQM</small></div>	<div>OUTDOOR</div> <div>—</div>	<div>COUNCIL</div> <div>RBKC</div>
<div>BATHROOMS</div> <div>2</div>		<div>EPC</div> <div>C</div>	<div>COUNCIL TAX</div> <div>G</div>
<div>TENURE</div> <div>Leasehold</div>	<div>LEASE LENGTH</div> <div>92 <small>YEARS</small></div>	<div>GROUND RENT</div> <div>—</div>	<div>SERVICE CHARGE</div> <div>£9,600 <small>P/Y</small></div>

The Property

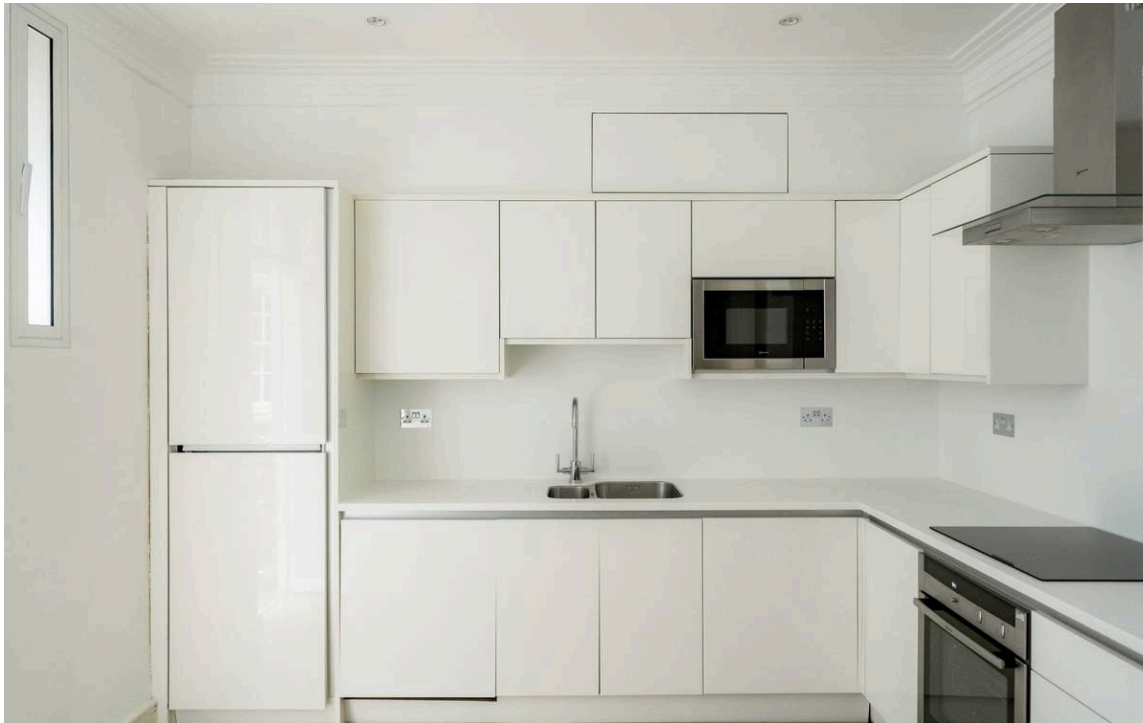
Three-bedroom flat with bright and stylish interiors close to South Kensington station



The Property

Well-proportioned flat with light-filled reception room in a popular Art Deco apartment building. Entering the flat on the second floor, a central corridor connects the main rooms. At one end lies a generous reception room flooded with light from wide, west-facing windows. This room includes separate dining and seating areas, while wooden floors add to the sense of style





Indoor Spaces

There is a well-proportioned kitchen with fitted units round the walls and room for an informal eating area.



The Bedrooms

This side of the flat also features a principal bedroom with an ensuite bathroom and a second double bedroom, this one with considerable storage space. The third bedroom is found on the far side of the flat, with an adjacent bathroom. The flat is decorated in a cool, contemporary fashion, which adds to the sense of light and space.





The Neighbourhood

Malvern Court is a sought-after Art Deco apartment building on the corner of Onslow Square with both porter and lift. The property is ideally located. From here, South Kensington underground station is a short walk away, while the world-class cultural facilities of the Museum District are also nearby. In addition, the many restaurants and shops of the King's Road and the Fulham Road are within easy reach.

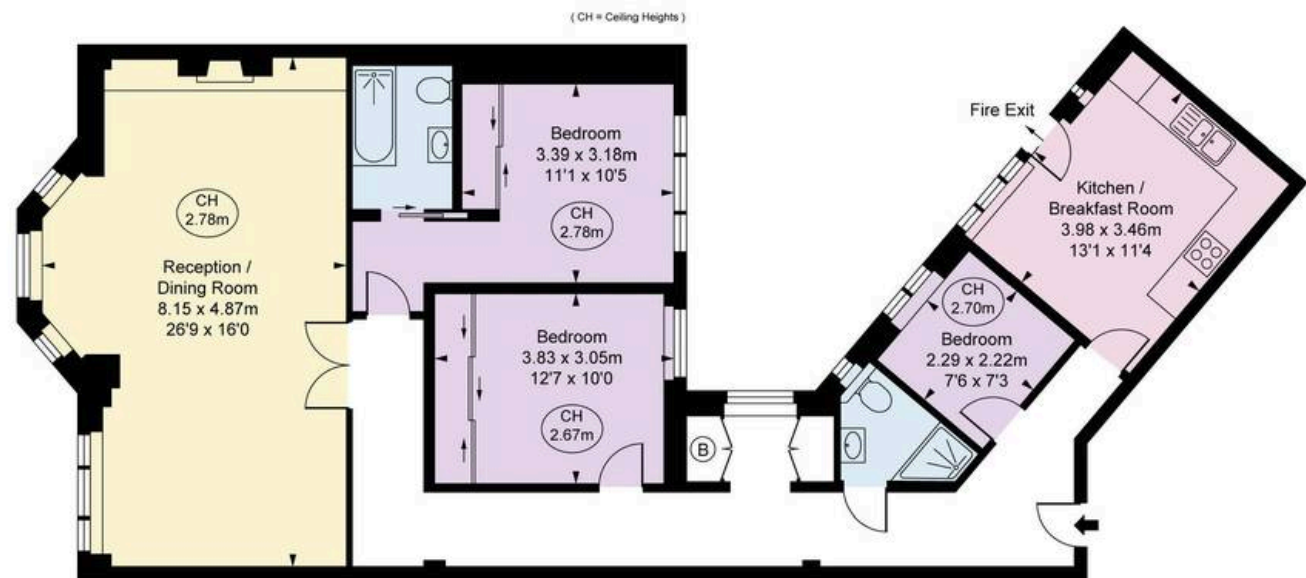
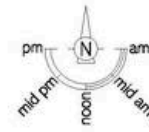
Malvern Court,
SW7

Approx Gross Internal Area

1,195 sq ft / 111.01 sq m

**RUSSELL
SIMPSON**

This plan is for layout guidance only. Not drawn to scale unless stated. Windows and door openings are approximate. Whilst every care is taken in the preparation of this plan, Please check all dimensions, shapes, and compass bearings before making any decisions reliant upon them.



SECOND FLOOR

**RUSSELL
SIMPSON**

Contact Us

+44 (0) 20 7225 0277

151A Sydney Street
London
SW3 6NT

chelsea@russellsimpson.co.uk

In accordance with the Property Mis-Description Act 1991, the following details have been prepared in good faith, and are not intended to constitute part of an offer or contract. Any information contained herein (whether in the text, plans or photographs) is given in good faith but should not be relied upon as being a statement of representation of fact. Nothing in these Particulars shall be deemed to be a statement that the property is in good condition or otherwise nor that any services or facilities are in good working order. Any measurements of distances referred to herein are approximate only. October 2021