



RUSSELL SIMPSON

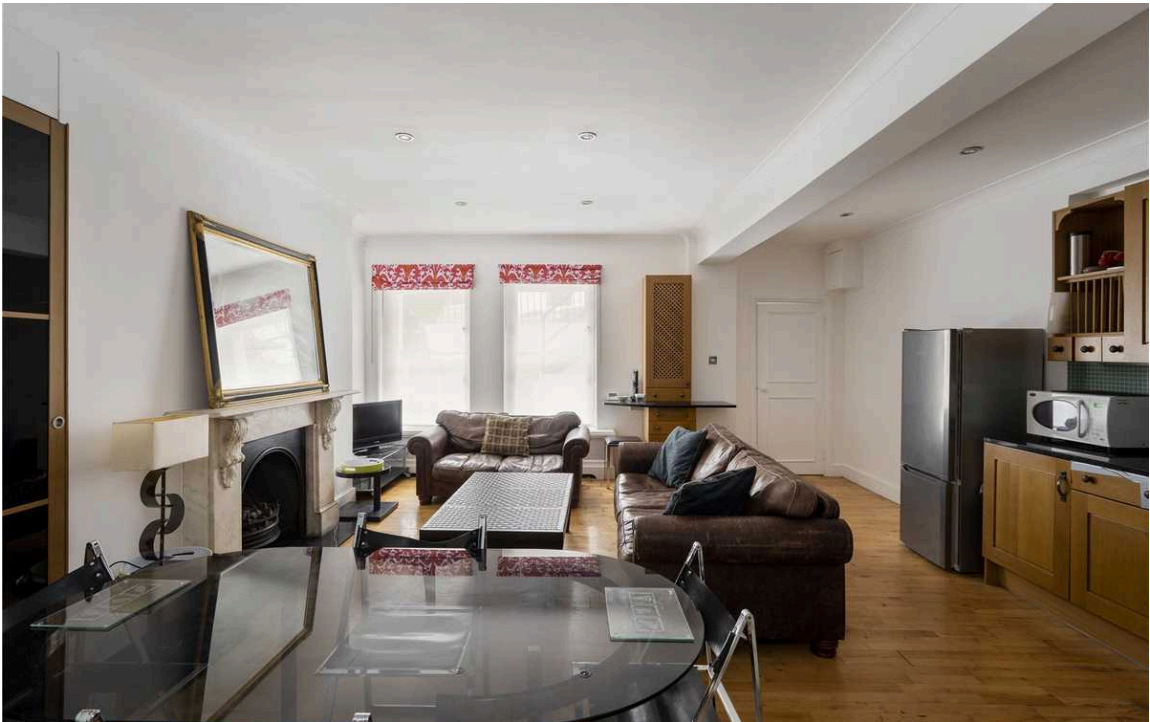
A Notting Hill apartment with
access onto Communal gardens

LADBROKE GARDENS
NOTTING HILL W11

Ladbroke Gardens

£1,000,000

<div>BEDROOMS</div> <div>1–2</div>	<div>INTERNAL</div> <div>908_{SQ FT}</div> <div>84_{SQM}</div>	<div>OUTDOOR</div> <div>—</div>	<div>COUNCIL</div> <div>RBKC</div>
<div>BATHROOMS</div> <div>2</div>		<div>EPC</div> <div>D</div>	<div>COUNCIL TAX</div> <div>G</div>
<div>TENURE</div> <div>Leasehold</div>	<div>LEASE LENGTH</div> <div>989_{YEARS}</div>	<div>GROUND RENT</div> <div>—</div>	<div>SERVICE CHARGE</div> <div>£3,400_{P/Y}</div>



The Property

Located on the lower ground of a handsome stucco fronted building, the flat benefits from great entertaining space with a large open plan kitchen/living room and dining. The principal bedroom en-suite offers a study that could also be used as a walk-in wardrobe. Further to that, there is an additional secondary accommodation and direct access to the communal garden from the flat.

img 1

Open Plan Kitchen

img 2

Bedroom With Views



The Neighbourhood

The flat is conveniently situated on Ladbroke Gardens, one of Notting Hill's prime addresses. The popular boutiques and Restaurants on Westbourne Grove and Kensington Park Road are withing a few minutes' walk. Notting Hill Gate underground station is within close proximity.

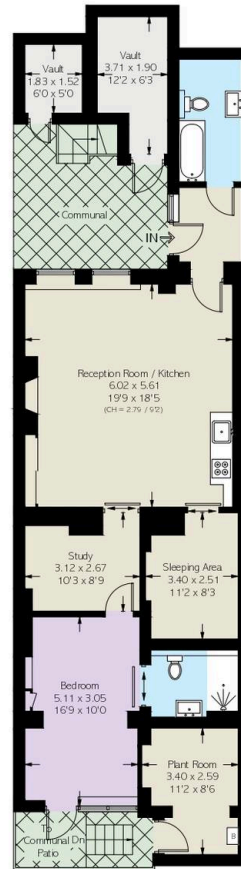
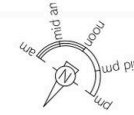
LADBOKE GARDENS, W11

Approximate Area = 908 sq ft / 84.4 sq m

Vaults And Plant Room = 195 sq ft / 18.1 sq m

Total = 1103 sq ft / 102.5 sq m

Including Limited Use Area (2 sq ft / 0.2 sq m)



Lower Ground Floor

VIEWING ARRANGEMENTS

Telephone: +44 (0) 20 7761 9691

Email: info@russellsimpson.co.uk

For more information on this property, please visit our website at www.russellsimpson.co.uk. Please note that the information on this website is for information only and does not constitute an offer. The information on this website is for information only and does not constitute an offer. The information on this website is for information only and does not constitute an offer.

**RUSSELL
SIMPSON**

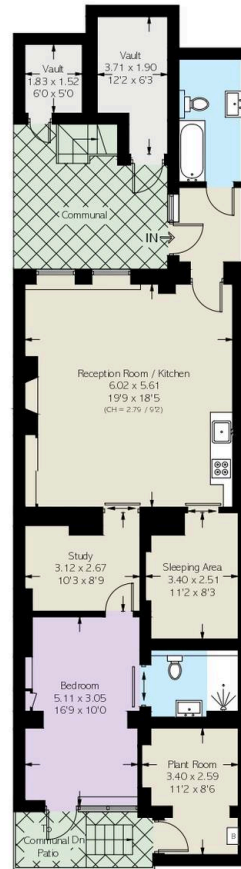
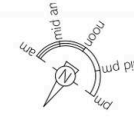
LADBOKE GARDENS, W11

Approximate Area = 908 sq ft / 84.4 sq m

Vaults And Plant Room = 195 sq ft / 18.1 sq m

Total = 1103 sq ft / 102.5 sq m

Including Limited Use Area (2 sq ft / 0.2 sq m)



Lower Ground Floor

VIEWING ARRANGEMENTS

Telephone: +44 (0) 20 7761 9691
Email: info@russellsimpson.co.uk

For more information on this property, please visit our website at www.russellsimpson.co.uk. Please note that the information on this website is for information only and does not constitute an offer of any financial product. The information on this website is for information only and does not constitute an offer of any financial product.

**RUSSELL
SIMPSON**

**RUSSELL
SIMPSON**

Contact Us

+44 (0) 20 3761 9691

13 Kensington Square
London
W8 5HD

kensington@russellsimpson.co.uk