

## **RUSSELL SIMPSON**

A magnificent semi-detached five-  
bedroom stucco-fronted family  
house

KENSINGTON GATE  
KENSINGTON W8

Kensington Gate

Sold

BEDROOMS 5	INTERNAL  3,447 SQ FT  320 SQM	OUTDOOR  482 SQ FT	COUNCIL TAX  H
BATHROOMS 5		EPC  D	TENURE  Freehold



## The Property

A large house on the south side of a historic garden square, offering splendid interiors and a sought-after location in the heart of Kensington.

This is a much-loved family home, decorated in a traditional and tasteful style to accentuate its historic character. Like most other properties on the square, it is Grade II\* listed to protect that unique history. At the same time, the generous size and enviable location offer a rare opportunity to any future owner.





## Entertaining Spaces

Entering the house, the main hallway lets onto a large dining room with views over the square, as well as a sitting room looking out into the garden. With their high ceilings and large windows, these rooms are perfectly proportioned for entertaining. Even more impressive is the beautiful drawing room upstairs, which occupies the entire first floor and is elegantly finished with decorative mouldings and ornamental designs.

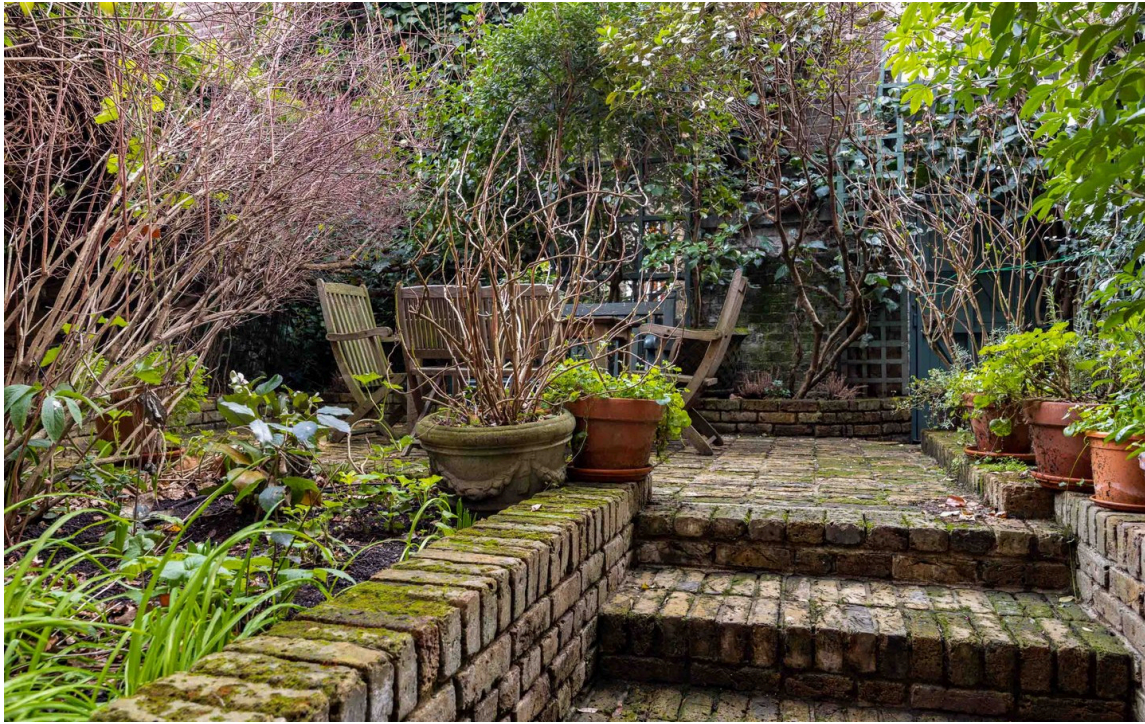






## Indoor Spaces

Downstairs, on the lower ground floor, the kitchen and family room provide a more informal space with easy access to the garden. Upstairs, on the second floor, the principal bedroom faces the back of the house, with its own ensuite bathroom. Four more bedrooms and three more bathrooms complete the rest of the house.



## Outdoor Spaces

The house features a south-facing garden with a discrete private door leading into Queens Gate Mews. It also includes a front balcony across the entire width of the drawing room, with views onto the garden square.

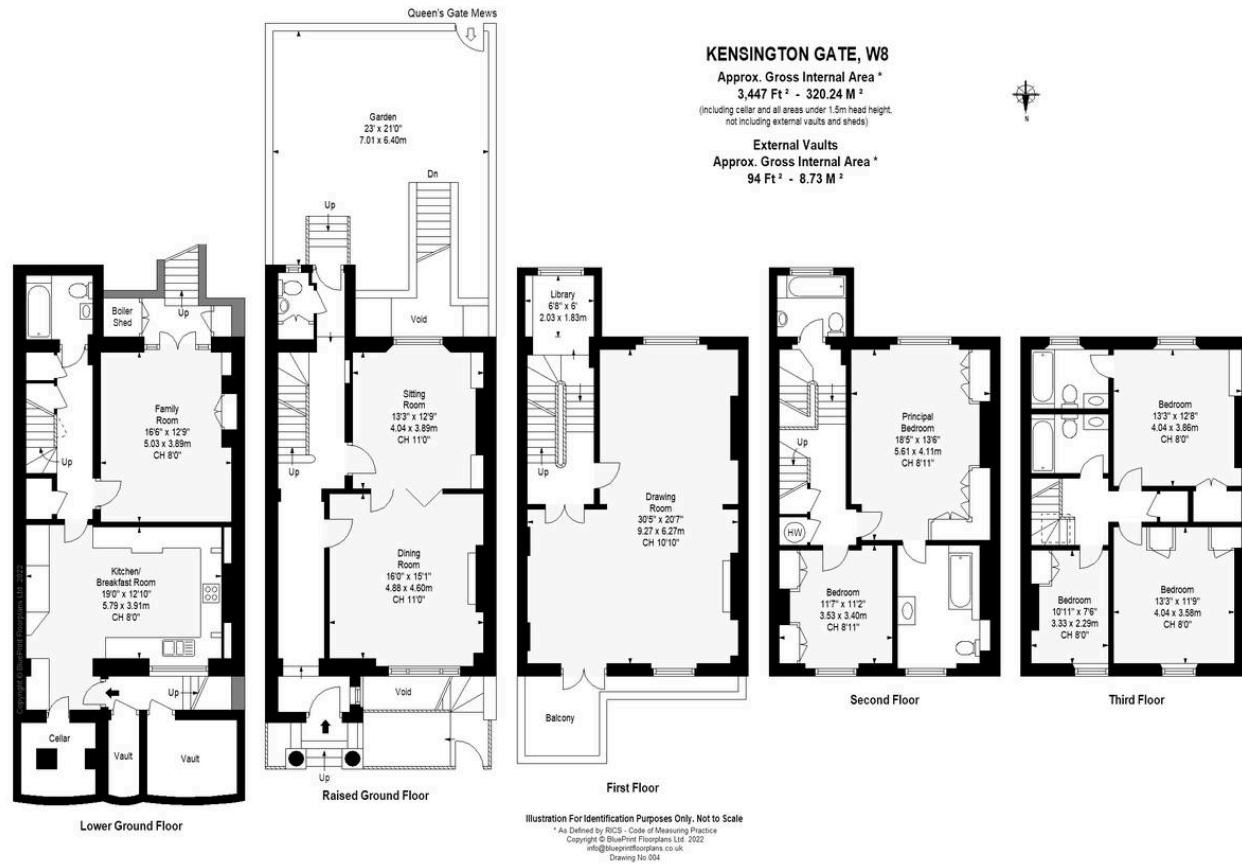




## The Neighbourhood

The property's white stucco front is decorated with a columned portico and patterned cornices showing the Italianate influence on the architecture. In addition, the secluded garden square is always open to residents, while Hyde Park and Kensington Gardens are both within easy walking distance.

Kensington Gate is a prestigious garden square with a unique history. It was once the site of the Kensington Workhouse, which inspired Charles Dickens's celebrated novel *Oliver Twist*. In the mid-nineteenth century, that building was replaced by the Italianate houses which now line the square, which were popular with aristocrats and politicians in the late Victorian Era. It remains a desirable address, well placed for many of the neighbourhood's excellent schools.





**RUSSELL  
SIMPSON**

---

## Contact Us

+44 (0) 20 7225 0277

Contact us

[info@russellsimpson.co.uk](mailto:info@russellsimpson.co.uk)

---

## Sydney Street

+44 (0) 20 7225 0277

151A Sydney Street

London

SW3 6NT

[chelsea@russellsimpson.co.uk](mailto:chelsea@russellsimpson.co.uk)

---

## Kensington Square

+44 (0) 20 3761 9691

13 Kensington Square

London

W8 5HD

[kensington@russellsimpson.co.uk](mailto:kensington@russellsimpson.co.uk)