

RUSSELL SIMPSON

A large family home, with a 40ft
south-facing garden

KEMPE ROAD
BRONDESBURY & QUEEN'S PARK NW6

Kempe Road

Sold

BEDROOMS 4	INTERNAL 2,257 SQ FT 209 SQM	OUTDOOR 867 SQ FT	COUNCIL TAX F
BATHROOMS 3		EPC C	TENURE Freehold



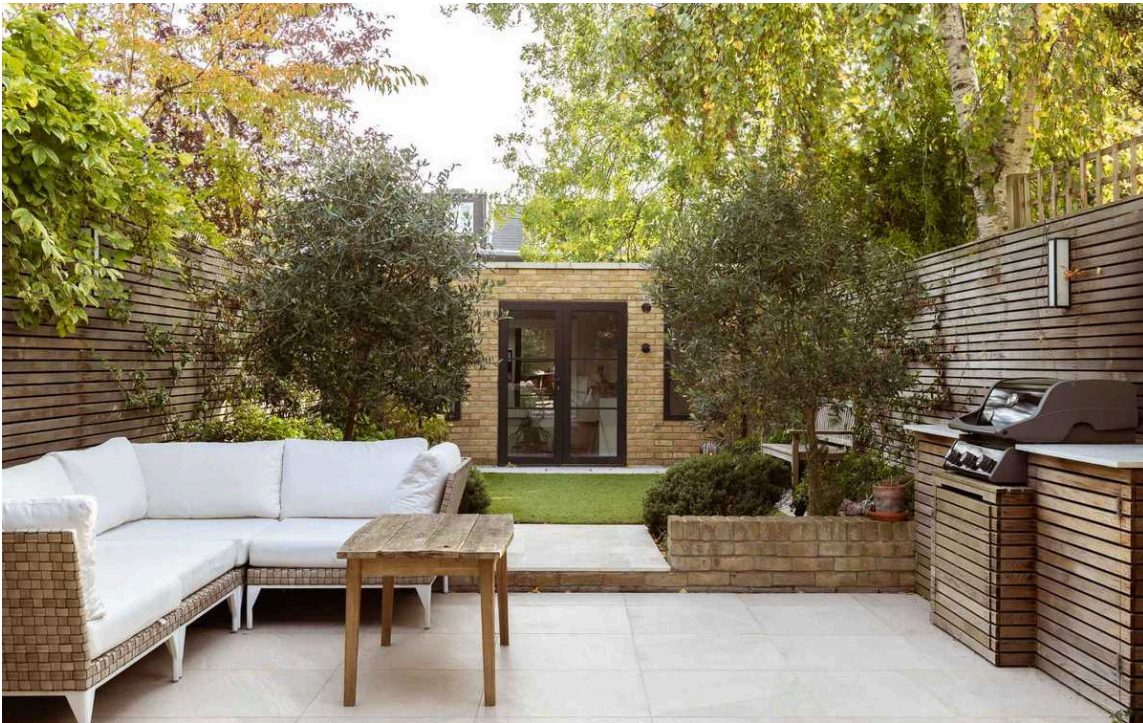
The Property

An extremely rare opportunity to acquire an exquisitely-appointed large family home with 3.2m ceiling heights in the kitchen/dining area leading out onto the 40ft south facing garden allowing for enviable indoor outdoor living.

The house has been expertly rebuilt, imagine walking into a contemporary, family-home with every detail you would want, already anticipated, interior designed by Stone Holland with close attention to detail on the lighting design and ergonomics of the house.

The house offers four generous bedrooms and the expansive living accommodation is well configured to suit modern day living flooded with natural light.





Outdoor Spaces

The property benefits from a further Summer House positioned at the end of the 40ft south facing garden, equipped with a wet room and sauna.



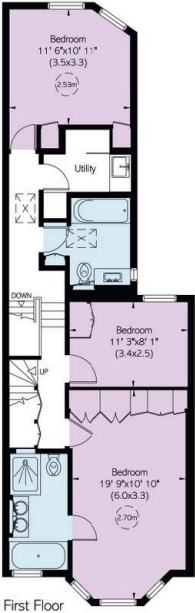
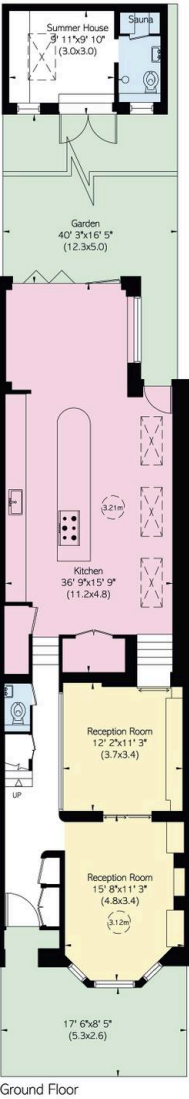
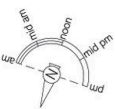


The Neighbourhood

Kempe Road is one of the premier roads in Queens Park, a stone's throw from the child friendly park, Salisbury Road with coffee shops, deli's alongside an array of excellent schools and nursery's.

KEMPE ROAD, NW6

Approximate Area = 2257 sq ft/ 210 sq m
Including Limited Use Area and Summer House (277 sq ft/ 26 sq m)
Outside Area = 867 sq ft/ 81 sq m



VIEWING INFORMATION
Telephone: 020 875 2121 (Mon-Fri 9am-5pm)
Email: enquiries@russellsimpson.co.uk

RUSSELL SIMPSON

**RUSSELL
SIMPSON**

Contact Us

+44 (0) 20 7225 0277

Contact us

info@russellsimpson.co.uk

Sydney Street

+44 (0) 20 7225 0277

151A Sydney Street

London

SW3 6NT

chelsea@russellsimpson.co.uk

Kensington Square

+44 (0) 20 3761 9691

13 Kensington Square

London

W8 5HD

kensington@russellsimpson.co.uk