

RUSSELL SIMPSON

A low built three bedroom house
which has been meticulously
refurbished throughout

JUBILEE PLACE
CHELSEA SW3

Jubilee Place

Sold

BEDROOMS 3	INTERNAL 2,112 SQ FT 196 SQM	OUTDOOR —	COUNCIL TAX CHE, H
BATHROOMS 4		EPC C	TENURE Freehold



The Property

The property benefits from an abundance of natural light and a pretty front courtyard garden, in this highly sought after one-way residential street in the heart of Chelsea.







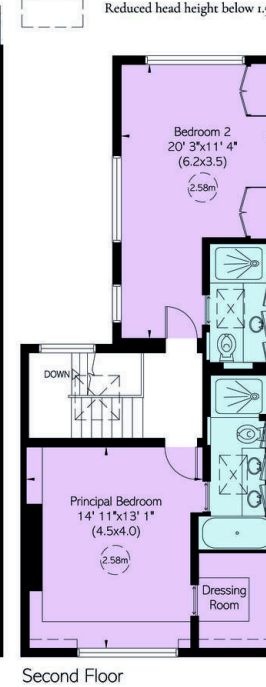
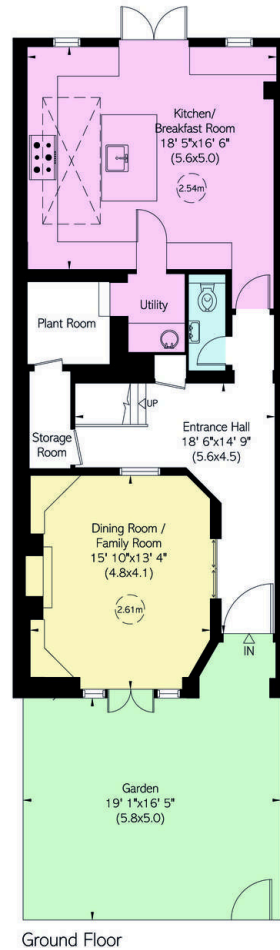
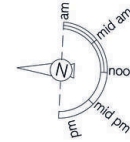
The Neighbourhood

Chelsea Green is a stone's throw away with its wonderful selection of independent shops, restaurants and boutiques.

Jubilee Place is a highly regarded address on a quiet one-way street leading off the Kings Road, up to Chelsea Green. The house is exceptionally well positioned for all the many restaurants, shops and transport links that the area has to offer.

JUBILEE PLACE, SW₃

Approximate Area = 2112 sq ft/ 196 sq m
Including Limited Use Area (7 sq ft/ 1 sq m)
Garden Area (338 sq ft/ 31 sq m)
Terrace Overall Area (146 sq ft/ 14 sq m)



VIEWING ARRANGEMENTS

Telephone: +44 (0) 20 7225 0277
Email: info@russellsimpson.co.uk

This plan is for general guidance only. You should always verify details. Windows and floor coverings are approximate. All measurements are subject to the measurement of the site. Please check all dimensions, details and contents carefully before making any decisions about your home.

**RUSSELL
SIMPSON**

**RUSSELL
SIMPSON**

Contact Us

+44 (0) 20 7225 0277

Contact us

info@russellsimpson.co.uk

Sydney Street

+44 (0) 20 7225 0277

151A Sydney Street

London

SW3 6NT

chelsea@russellsimpson.co.uk

Kensington Square

+44 (0) 20 3761 9691

13 Kensington Square

London

W8 5HD

kensington@russellsimpson.co.uk