



RUSSELL SIMPSON

Exceptionally bright and spacious
flat in a historic artist's home,
moments away from Hyde Park

HYDE PARK GATE
SOUTH KENSINGTON SW7

Hyde Park Gate

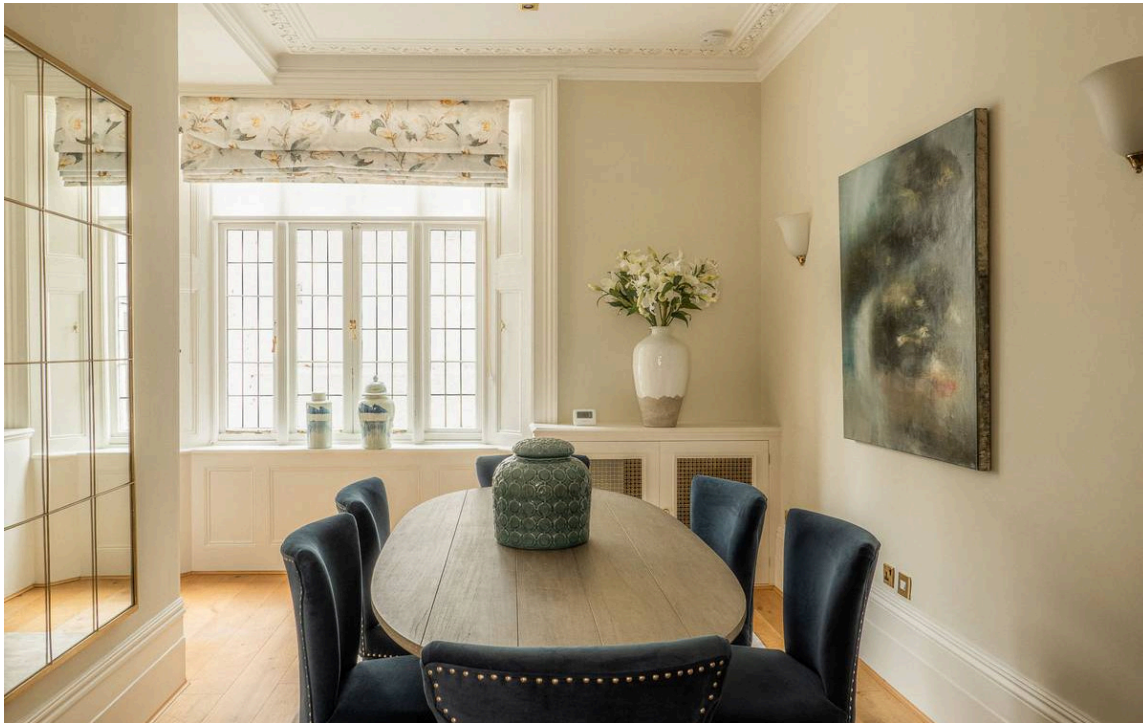
£2,990,000

<div>BEDROOMS</div> <div>3</div>	<div>INTERNAL</div> <div>2,014 <small>SQ FT</small></div> <div>187 <small>SQM</small></div>	<div>OUTDOOR</div> <div>171 <small>SQ FT</small></div>	<div>COUNCIL</div> <div>RBKC</div>
<div>BATHROOMS</div> <div>3</div>		<div>EPC</div> <div>D</div>	<div>COUNCIL TAX</div> <div>H</div>
<div>TENURE</div> <div>Leasehold</div>	<div>LEASE LENGTH</div> <div>972 <small>YEARS</small></div>	<div>GROUND RENT</div> <div>—</div>	<div>SERVICE CHARGE</div> <div>£6,000 <small>P/Y</small></div>



The Property

Elegant three-bedroom duplex flat with rear terrace on a prestigious street in South Kensington



Indoor Spaces

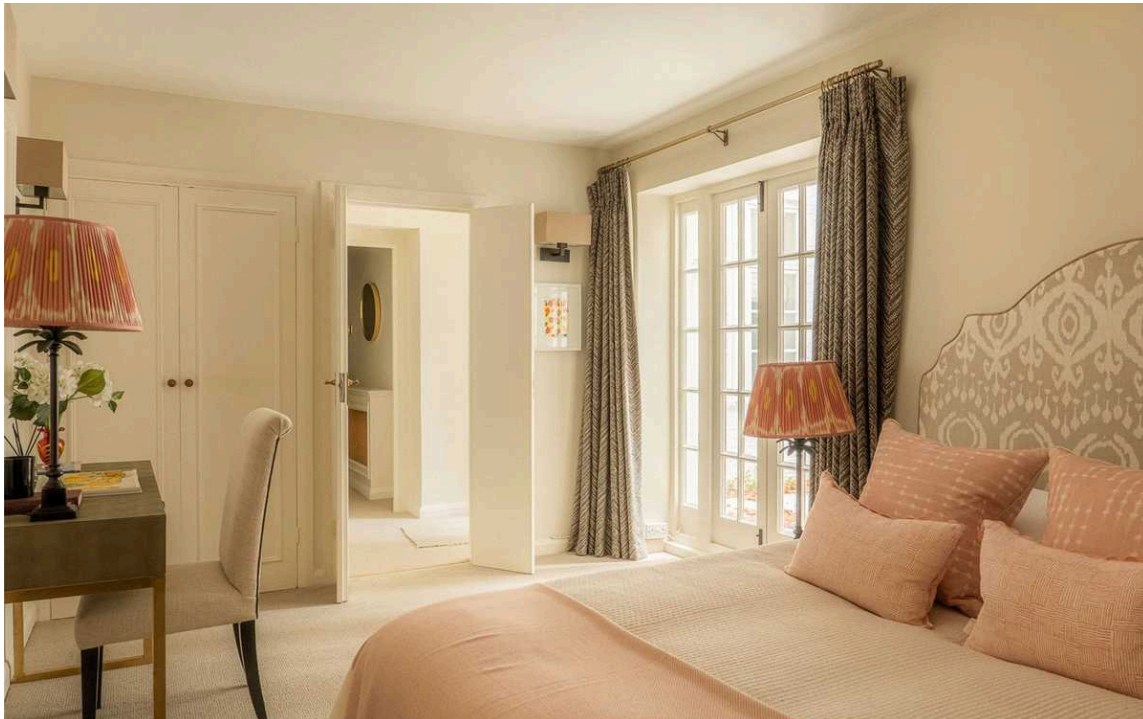
Stepping into the flat on the raised ground floor, the front hall leads through to a dining room. Next door is the kitchen with fitted units and stone tiling, while double doors lead on to a generous reception room, filled with light from a broad bay window. High ceilings, wooden floors, and decorative mouldings give these rooms a sense of grandeur and elegance.





The Bedrooms

The lower ground floor contains three bedrooms. The principal bedroom offers an ensuite bathroom with a bath, a walk-in wardrobe and considerable storage space. The other two bedrooms are also ensuite, and both have French doors leading out onto the terrace.



The Design

The flat is presented in good condition. Its interiors mix traditional and contemporary details to create stylish but comfortable interiors.





The Neighbourhood

The property includes a paved rear terrace with enough space for outdoor eating.

The flat forms part of a townhouse built in 1871 by the Victorian architect Richard Norman Shaw, who also designed churches, country houses and the original Scotland Yard. Furthermore, it was home to the celebrated artist Sir Jacob Epstein from 1929-1959, a pioneer of Modernist sculpture. The house's first-floor ballroom became his studio.

The property is exceptionally well-positioned. Hyde Park and Kensington Gardens are both a short distance away, while Gloucester Road underground station is also close. In addition, the world-class cultural institutions of South Kensington and the exceptional restaurants and shops of Kensington High Street are within easy reach.

Hyde Park Gate is one of the most prestigious addresses in London. The name is shared by two parallel roads leading south from the park, lined with embassies, private homes and mansion flats.

Hyde Park Gate, SW7

Approx Gross Internal Area

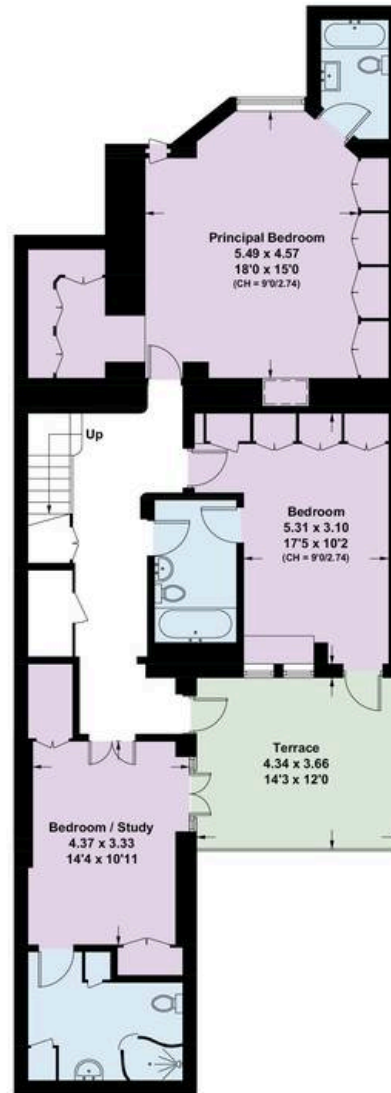
2,014 sq ft / 187.1 sq m

Including Limited Use Area

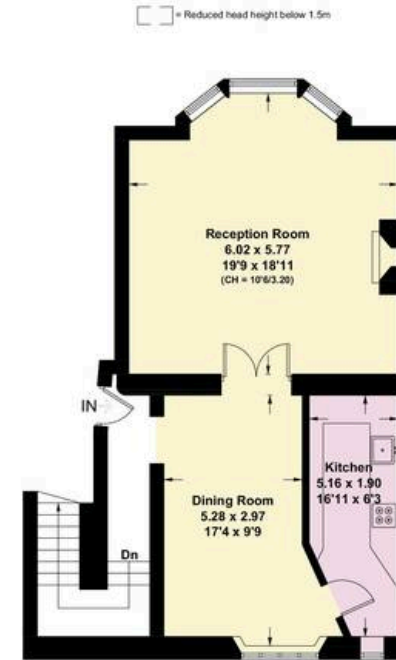
15 sqft / 1.4 sq m

**RUSSELL
SIMPSON**

This plan is for layout guidance only. Not drawn to scale unless stated. Windows and door openings are approximate. Whilst every care is taken in the preparation of this plan. Please check all dimensions, shapes, and compass bearings before making any decisions reliant upon them.



LOWER GROUND FLOOR



RAISED GROUND FLOOR



**RUSSELL
SIMPSON**

Contact Us

+44 (0) 20 7225 0277

151A Sydney Street
London
SW3 6NT

chelsea@russellsimpson.co.uk

In accordance with the Property Mis-Description Act 1991, the following details have been prepared in good faith, and are not intended to constitute part of an offer or contract. Any information contained herein (whether in the text, plans or photographs) is given in good faith but should not be relied upon as being a statement of representation of fact. Nothing in these Particulars shall be deemed to be a statement that the property is in good condition or otherwise nor that any services or facilities are in good working order. Any measurements of distances referred to herein are approximate only. October 2021