



RUSSELL SIMPSON

A first floor apartment with high
ceilings and beautiful design

GOLBORNE ROAD
W10

Golborne Road

Sold

<div>BEDROOMS</div> <div>1</div>	<div>INTERNAL</div> <div>578_{SQ FT}</div> <div>53_{SQM}</div>	<div>OUTDOOR</div> <div>—</div>	<div>COUNCIL</div> <div>—</div>
<div>BATHROOMS</div> <div>1</div>		<div>EPC</div> <div>D</div>	<div>COUNCIL TAX</div> <div>D</div>
<div>TENURE</div> <div>Leasehold</div>	<div>LEASE LENGTH</div> <div>171_{YEARS}</div>	<div>GROUND RENT</div> <div>£150_{P/Y}</div>	<div>SERVICE CHARGE</div> <div>£275_{P/Y}</div>

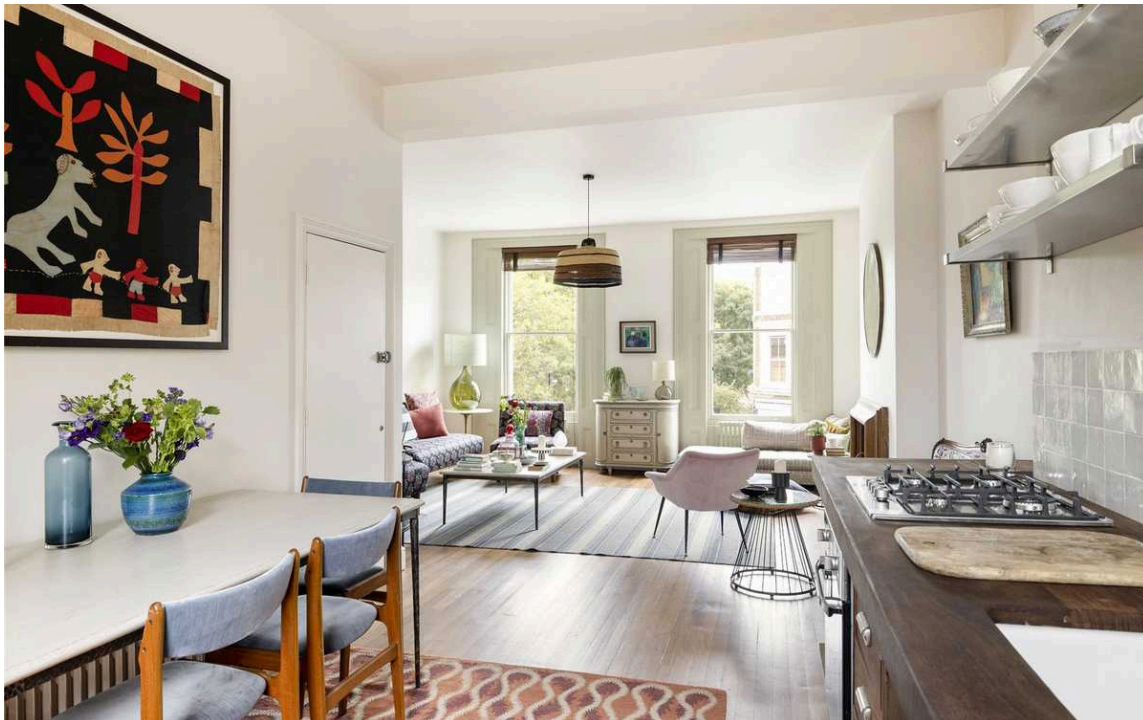




The Property

A beautifully designed first-floor one-bedroom apartment with amazing ceiling heights, flooded with light throughout.

Upon entrance to the flat, you are met with a beautiful and spacious living room/kitchen and dining benefiting from amazing wooden floors. The en-suite bedroom is set at the rear of the building.



Indoor Spaces

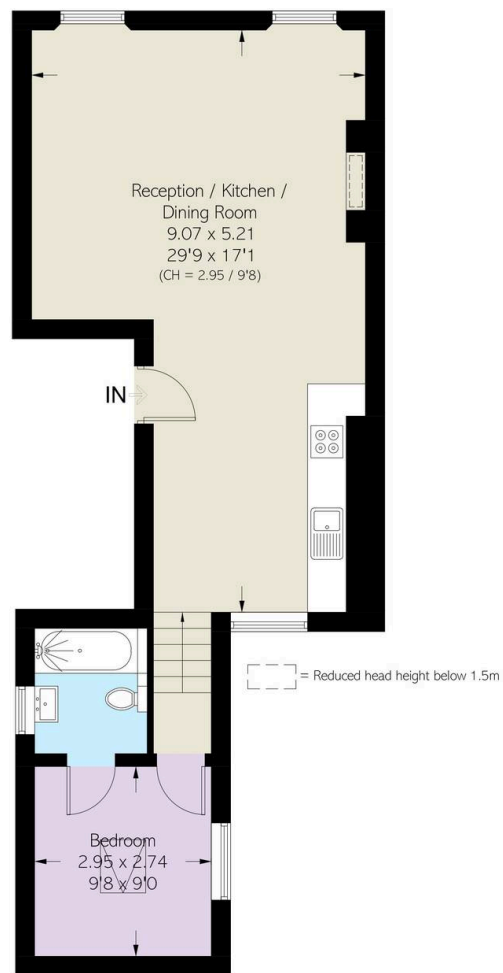
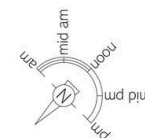
Upon entrance to the flat, you are met with a beautiful and spacious living room/kitchen and dining benefiting from amazing wooden floors. The en-suite bedroom is set at the rear of the building.



The Neighbourhood

The flat is conveniently positioned on Golborne Road for the outstanding amenities in this vibrant part of Notting Hill. Ladbroke Grove underground station is a short walk away.

Approximate Area = 578 sq ft / 53.7 sq m
Including Limited Use Area (10 sq ft / 0.9 sq m)



First Floor

RUSSELL
SIMPSON

**RUSSELL
SIMPSON**

Contact Us

+44 (0) 20 7225 0277

Contact us

info@russellsimpson.co.uk

Sydney Street

+44 (0) 20 7225 0277

151A Sydney Street

London

SW3 6NT

chelsea@russellsimpson.co.uk

Kensington Square

+44 (0) 20 3761 9691

13 Kensington Square

London

W8 5HD

kensington@russellsimpson.co.uk