



RUSSELL SIMPSON

Magnificent five-bedroom white
stucco house on one of Belgravia's
most prestigious streets

GERALD ROAD
BELGRAVIA SW1W

Gerald Road

Sold

BEDROOMS 5	INTERNAL 3,315 SQ FT 307 SQM	OUTDOOR 577 SQ FT	COUNCIL TAX H
BATHROOMS 5		EPC E	TENURE Freehold

The Property

A non listed town house with elegant and spacious interiors and south-east facing terrace

Stepping into the house on the ground floor, the entrance hall leads through to a double reception room divided by folding doors. At the far end of the hall lies a fitted kitchen, connected to an informal dining area. A lantern skylight fill this space with brightness throughout the day, while double French doors open onto a balcony.



Kitchen

img 2



Drawing Room

The first floor is entirely occupied by a grand reception room. With its high ceilings, full-length French doors, and parquet wooden flooring, this makes for an impressive entertaining space. Meanwhile, on the half-landing, double French doors lead out onto the terrace.



Indoor Spaces

Taken together, this is impressive house with bright and spacious interiors. They are decorated in an elegant style to suit the historic setting and presented in good condition.

The property includes a south-east facing rear terrace with a paved seating area and planted borders. It also includes a first-floor front balcony and a lower-ground-floor courtyard. Furthermore, the property is set back from the street by a gated front garden, giving an added sense of seclusion





The Bedrooms

The sense of grandeur continues into the principal bedroom, which fills the second floor and features a generous ensuite bathroom with a bath. There are two more bedrooms on the third floor, and two bathrooms on both half landings. Further skylights ensure the staircase is flooded with sunshine.

The lower ground floor offers two bedrooms, one with an ensuite bathroom, the other with French doors leading onto a courtyard. It also contains a kitchen, a utility room, considerable storage space and separate street access.

img 1

Principal Bedroom





The Neighbourhood

Gerald Street is a prestigious residential street in Belgravia lined with white stucco townhouses. The southern terrace is especially sought-after, with its south-facing rear gardens. From here, the restaurants and shops of Elizabeth Street are close, while Sloane Square and Victoria stations are both within walking distance.

Gerald Road, SW1W

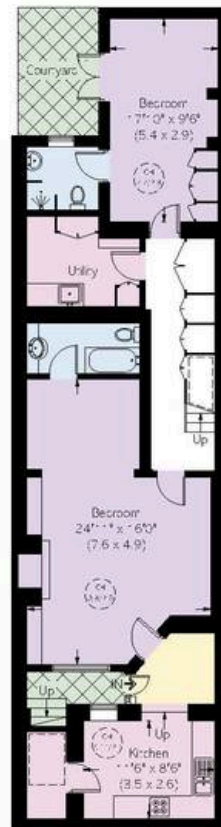
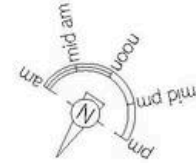
Approximate area
3315 sq ft / 308 sq m

Including limited use area
(48 sq ft / 4.5 sq m)

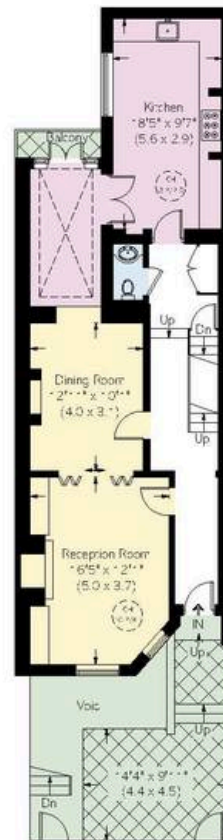
Approximate external area
578 sq ft / 53.7 sq m

**RUSSELL
SIMPSON**

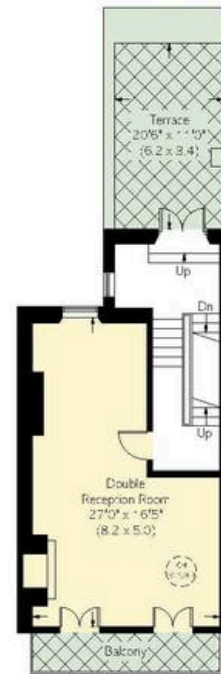
This plan is for layout guidance only.
Not drawn to scale unless stated. Windows
and door openings are approximate. Whilst
every care is taken in the preparation of this
plan, please check all dimensions, shapes,
and compass bearings before making any
decisions reliant upon them.



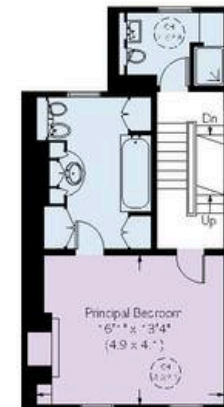
Lower Ground Floor



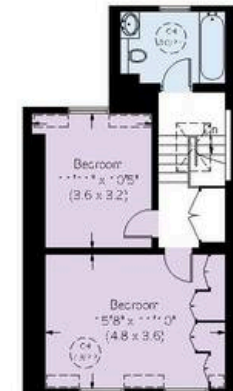
Raised Ground Floor



First Floor



Second Floor



Third Floor

**RUSSELL
SIMPSON**

Contact Us

+44 (0) 20 7225 0277

Contact us

info@russellsimpson.co.uk

Sydney Street

+44 (0) 20 7225 0277

151A Sydney Street

London

SW3 6NT

chelsea@russellsimpson.co.uk

Kensington Square

+44 (0) 20 3761 9691

13 Kensington Square

London

W8 5HD

kensington@russellsimpson.co.uk

In accordance with the Property Mis-Description Act 1991, the following details have been prepared in good faith, and are not intended to constitute part of an offer or contract. Any information contained herein (whether in the text, plans or photographs) is given in good faith but should not be relied upon as being a statement of representation of fact. Nothing in these Particulars shall be deemed to be a statement that the property is in good condition or otherwise nor that any services or facilities are in good working order. Any measurements of distances referred to herein are approximate only. October 2021