



RUSSELL SIMPSON

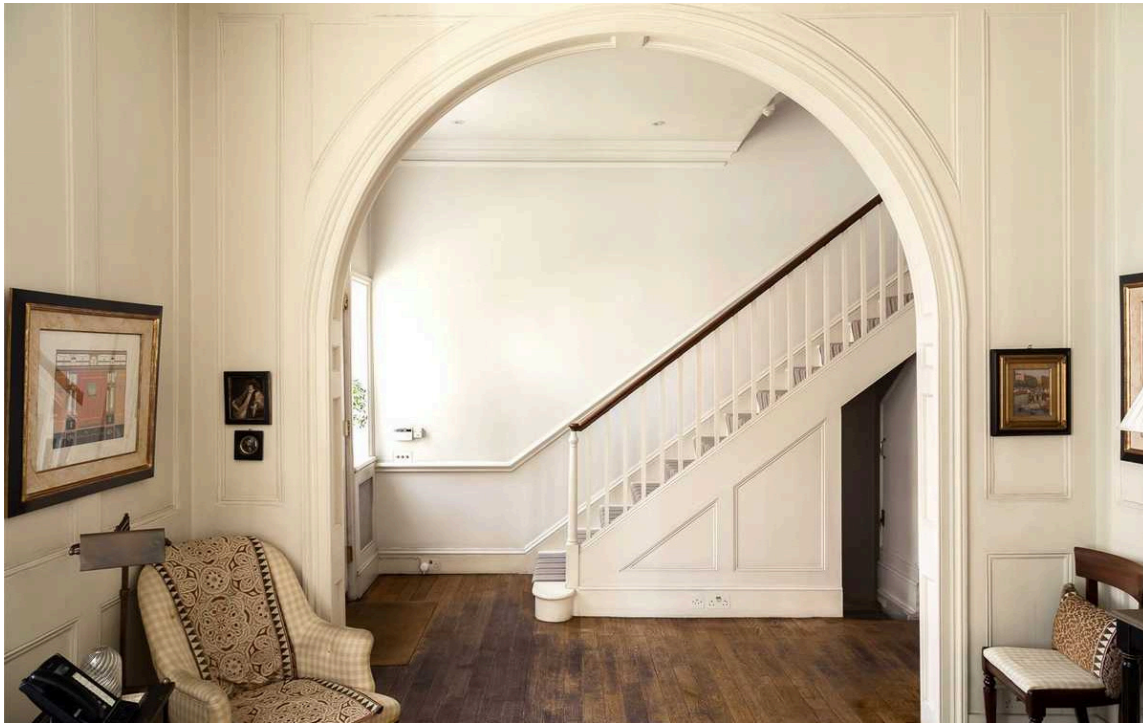
An exceptional Grade II listed
Georgian house, built in 1771,
standing on the corner of Cheyne
Walk and Beaufort Street

CHEYNE WALK
CHELSEA SW10

Cheyne Walk

Sold

BEDROOMS 8	INTERNAL 6,368 SQ FT 591 SQM	OUTDOOR —	COUNCIL TAX H
BATHROOMS 6		EPC E	TENURE Freehold



The Property

Bellevue Lodge is a spectacularly wide house with the advantage of extensive entertaining rooms both on the ground and first floors; each room has magnificent proportions with beautiful windows and far reaching views from the south facade. Presented in immaculate condition, this would make an ideal family home but also perfect for lavish entertaining.

The front of the house benefits from remarkable central windows on three of the four stories. The south facade has sash windows on the ground and second floor, with a very special conservatory enjoying iconic views east across the River Thames, Battersea and Albert Bridge, as well as westerly views over Turners Reach and the river beyond.



Indoor Spaces



Russell Simpson

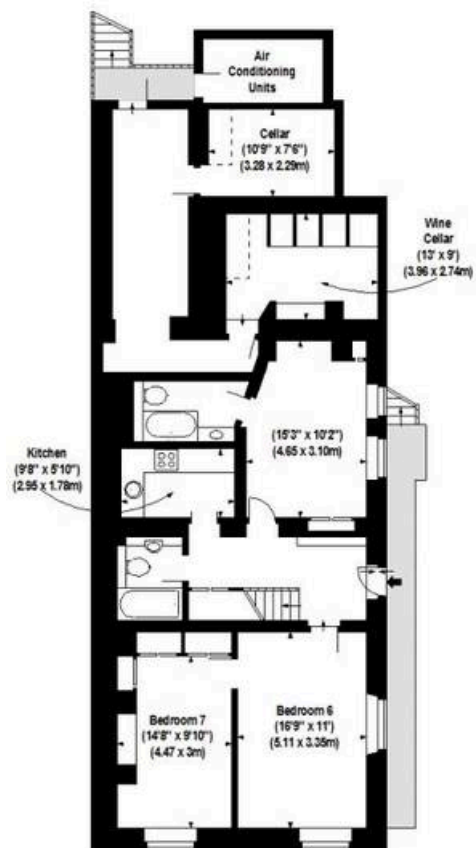


Cheyne Walk

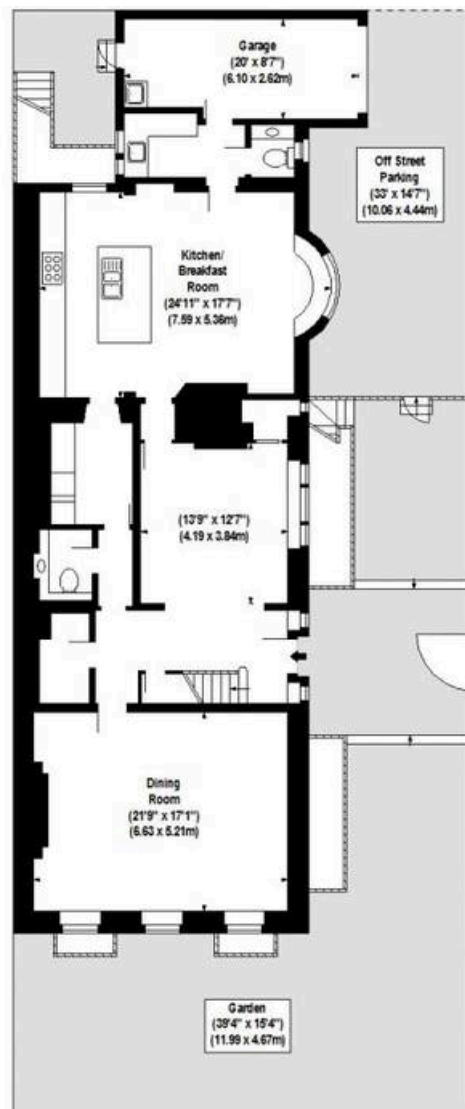
The Neighbourhood

Cheyne Walk, which takes its name from William, Lord Cheyne, who owned the manor of Chelsea until 1712, has probably known more famous residents per square metre than any other thoroughfare in London.

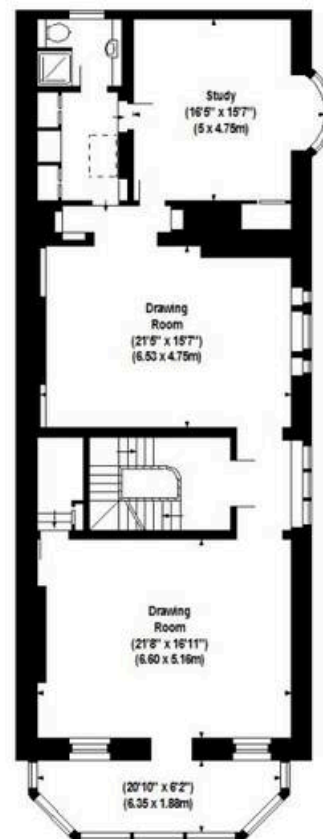




LOWER GROUND FLOOR



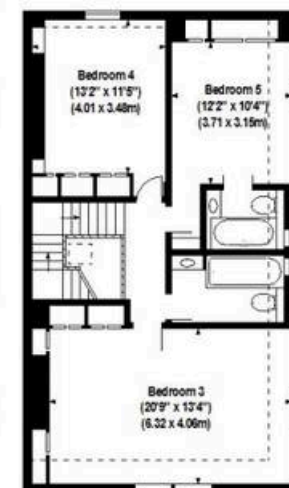
GROUND FLOOR



FIRST FLOOR



SECOND FLOOR



THIRD FLOOR

**BELLE VUE LODGE,
CHEYNE WALK, SW3**
APPROX. GROSS INTERNAL AREA *
6368 Ft² - 591.59 M²
(Including Garage)

Illustration For Identification Purposes Only. Not to Scale
* As Defined by NICS - Code of Measuring Practice



**RUSSELL
SIMPSON**

Contact Us

+44 (0) 20 7225 0277

Contact us

info@russellsimpson.co.uk

Sydney Street

+44 (0) 20 7225 0277

151A Sydney Street

London

SW3 6NT

chelsea@russellsimpson.co.uk

Kensington Square

+44 (0) 20 3761 9691

13 Kensington Square

London

W8 5HD

kensington@russellsimpson.co.uk