



RUSSELL SIMPSON

Charming architect designed
apartment steeped in history

BRAMLEY ROAD
NORTH KENSINGTON W10

Bramley Road

£875,000

<div>BEDROOMS</div> <div>2</div>	<div>INTERNAL</div> <div>821 <small>SQ FT</small></div> <div>76 <small>SQM</small></div>	<div>OUTDOOR</div> <div>—</div>	<div>COUNCIL</div> <div>RBKC</div>
<div>BATHROOMS</div> <div>2</div>		<div>EPC</div> <div>D</div>	<div>COUNCIL TAX</div> <div>D</div>
<div>TENURE</div> <div>Leasehold</div>	<div>LEASE LENGTH</div> <div>963 <small>YEARS</small></div>	<div>GROUND RENT</div> <div>—</div>	<div>SERVICE CHARGE</div> <div>—</div>

The Property

A well-proportioned bright apartment with thoughtfully designed living space

Throughout the apartment, the considered design combines contemporary elements with characterful touches, creating a well-balanced space that feels both refined and welcoming.





Indoor Spaces

Upon entering, the eye is drawn to the reception room that flows seamlessly into the open-plan kitchen, fitted with custom copper fronted cabinetry complemented by green granite countertops, along with integrated appliances. Three South facing windows bathe the space in natural light, and hardwood flooring brings a sense of warmth.



The Bedrooms

The flat offers two well-proportioned bedrooms facing South West over Freston Road. The principal bedroom features built-in wardrobes providing excellent storage, and benefits from an en-suite shower room with contemporary fixtures. The second bedroom is equally well-sized and also includes its own en-suite bathroom and built-in wardrobes.





The Neighbourhood

The property is found within the former Bramley Arms, an historic pub constructed around 1870 and is well-known for being the location for a number of films through the 1950's until it's conversion in the late 1980's. Situated at the quiet and secluded end of Bramley Road, the building has been carefully refurbished and maintained to highlight its history and character.

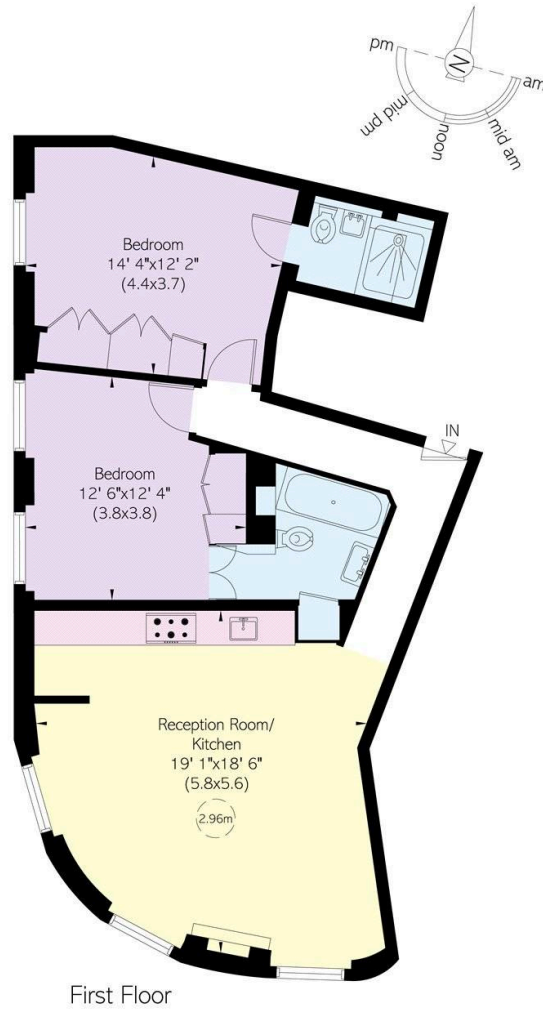
The property is ideally located in close proximity to Portobello Road, Holland Park & Shepherds Bush, with excellent transport links and Latimer Road station moments away, providing convenient access to central London.

Bramley Road, W10

**RUSSELL
SIMPSON**

Approximate Internal Area
821 sq ft/ 76 sq m

This plan is for layout guidance only. Not drawn to scale unless stated. Windows and door openings are approximate. Whilst every care is taken in the preparation of this plan please check all dimensions, shapes, and compass bearings before making any decisions reliant upon them.



**RUSSELL
SIMPSON**

Contact Us

+44 (0) 20 3761 9691

13 Kensington Square
London
W8 5HD

kensington@russellsimpson.co.uk