



RUSSELL SIMPSON

An outstanding five bedroom
maisonette set across three floors of
an impressive Victorian building
with a terrace

BENBOW ROAD
HAMMERSMITH W6

Benbow Road

Sold

<div>BEDROOMS</div> <div>5</div>	<div>INTERNAL</div> <div>1,748 <small>SQ FT</small></div> <div>162 <small>SQM</small></div>	<div>OUTDOOR</div> <div>—</div>	<div>COUNCIL</div> <div>HMM</div>
<div>BATHROOMS</div> <div>4</div>		<div>EPC</div> <div>G</div>	<div>COUNCIL TAX</div> <div>—</div>
<div>TENURE</div> <div>Leasehold</div>	<div>LEASE LENGTH</div> <div>213 <small>YEARS</small></div>	<div>GROUND RENT</div> <div>—</div>	<div>SERVICE CHARGE</div> <div>£500 <small>P/Y</small></div>



The Property

The apartment measures approximately 1750 square and benefits from a spacious and bright south facing reception, adjacent to the large kitchen/dining-room, excellent for entertaining alongside a guest w/c and utility room.

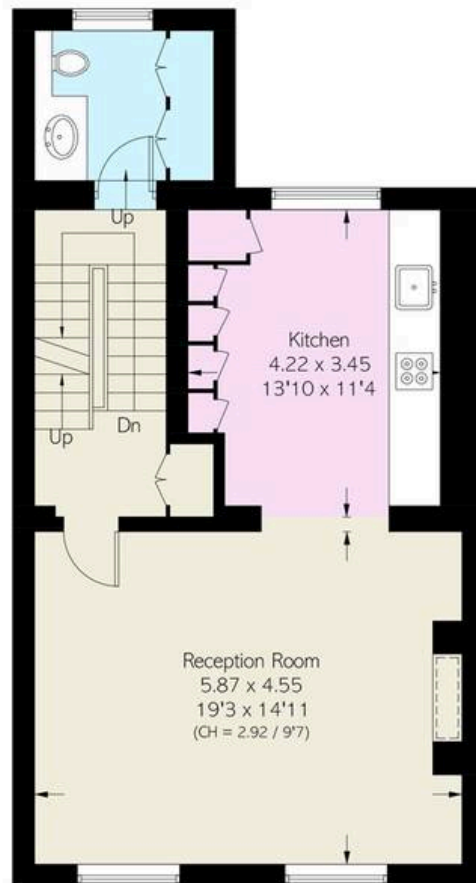
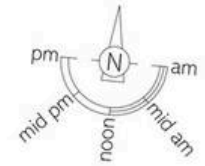
The principle en-suite is situated on the second floor with an open aspect to the rear. A further two double bedrooms, and shower room are positioned alongside. The third floor accommodates two further bedrooms which would work well as a home office depending on the incoming purchasers requirements, and a family bathroom.

Benbow Road is a quiet residential road in the desirable Brackenbury Village, conveniently situated close to the many amenities of Brackenbury Village and larger shopping facilities of Goldhawk Road and Westfield Shopping Centre. The property is also within close proximity to a number of reputable schools and local parks.

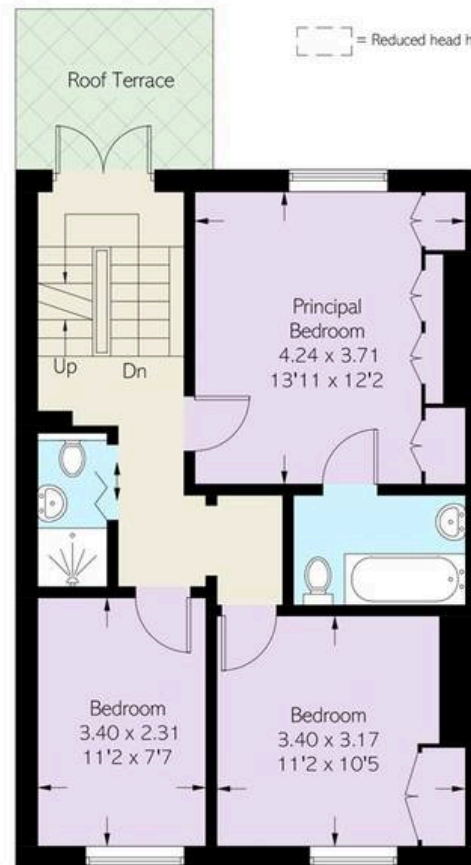


BENBOW ROAD, W6

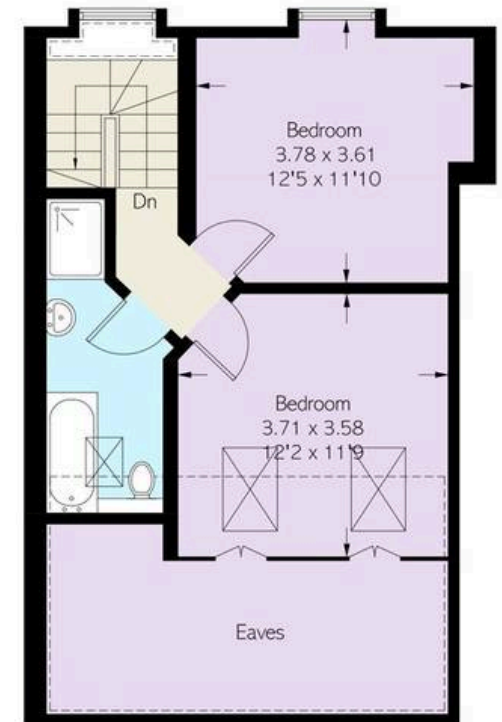
Approximate Area = 1748 sq ft / 162.4 sq m
Including Limited Use Area (207 sq ft / 19.2 sq m)



First Floor



Second Floor



Third Floor

**RUSSELL
SIMPSON**

Contact Us

+44 (0) 20 7225 0277

Contact us

info@russellsimpson.co.uk

Sydney Street

+44 (0) 20 7225 0277

151A Sydney Street

London

SW3 6NT

chelsea@russellsimpson.co.uk

Kensington Square

+44 (0) 20 3761 9691

13 Kensington Square

London

W8 5HD

kensington@russellsimpson.co.uk